

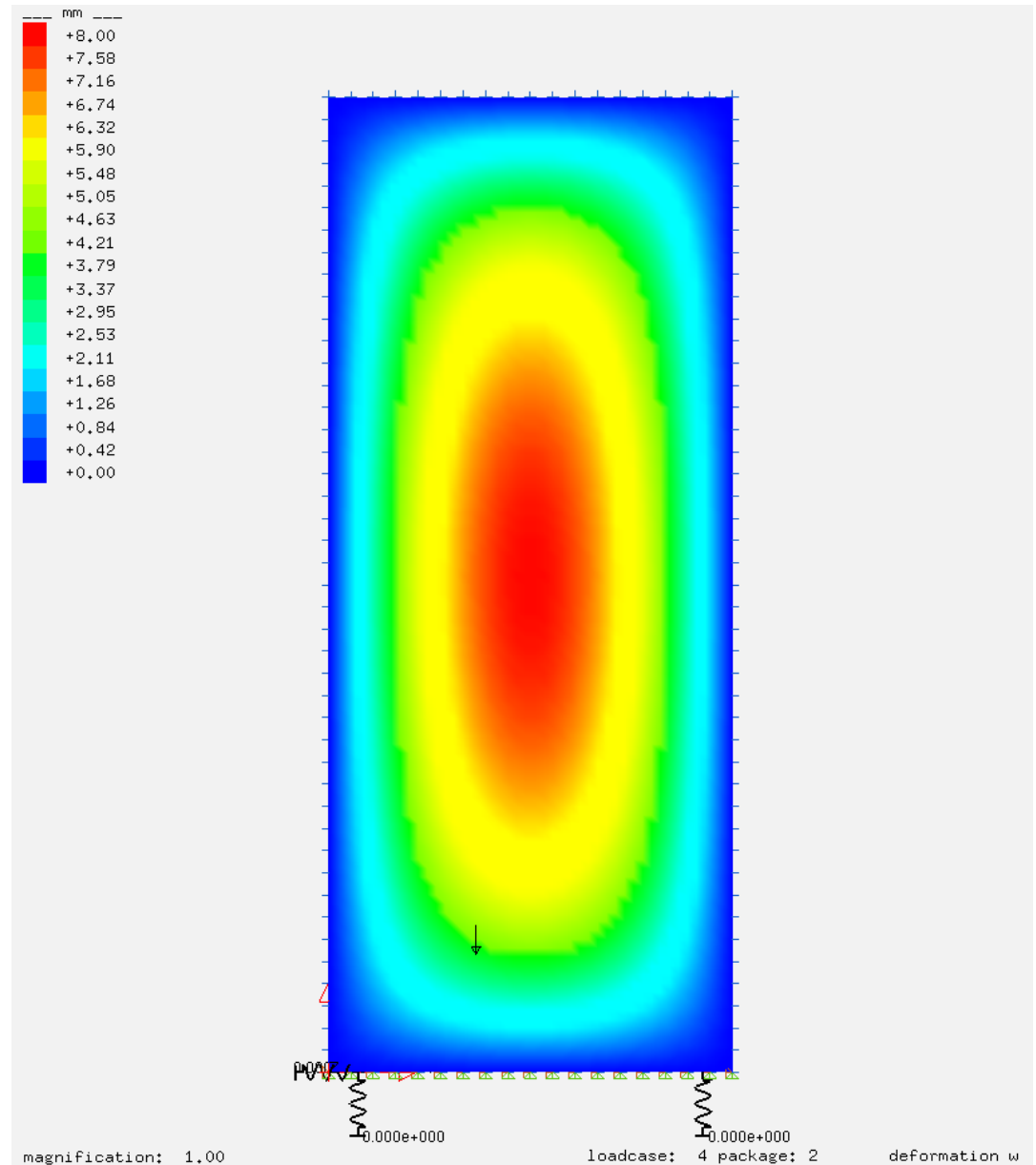
Package layer	stress	loading case
-	-	-
	N/mm ²	
2	8.62	4
2	7.23	1
1	9.47	3
1	8.33	2

Min. principal stress:

Package layer	stress	loading case
-	-	-
	N/mm ²	
2	-7.27	1
2	-8.66	4
1	-8.34	2
1	-9.48	3

Minimum and maximum displacements:

Package	displacement	loading case
-	mm	-
2	8.00 (max)	4
2	-6.70 (min)	1
1	7.67 (max)	3
1	-6.74 (min)	2



Package	layer	stress	loading case
-	-	N/mm ²	-
2	3	12.52	4
2	1	10.45	1
1	3	13.64	3
1	1	12.15	2

Min. principal stress:

Package	layer	stress	loading case
-	-	N/mm ²	-
2	3	-10.49	1
2	1	-12.53	4
1	3	-12.14	2
1	1	-13.61	3

Minimum and maximum displacements:

Package	displacement	loading case
-	mm	-
2	11.66 (max)	4
2	-9.71 (min)	1
1	11.08 (max)	3
1	-9.85 (min)	2

